

RETAIL



PASEO PLAZA | SWC of South 10th Street and Hwy 83
Rioco Real Estate Services

**AVAILABLE
FOR LEASE**



PASEO PLAZA

SWC of South
10th St & HWY 83

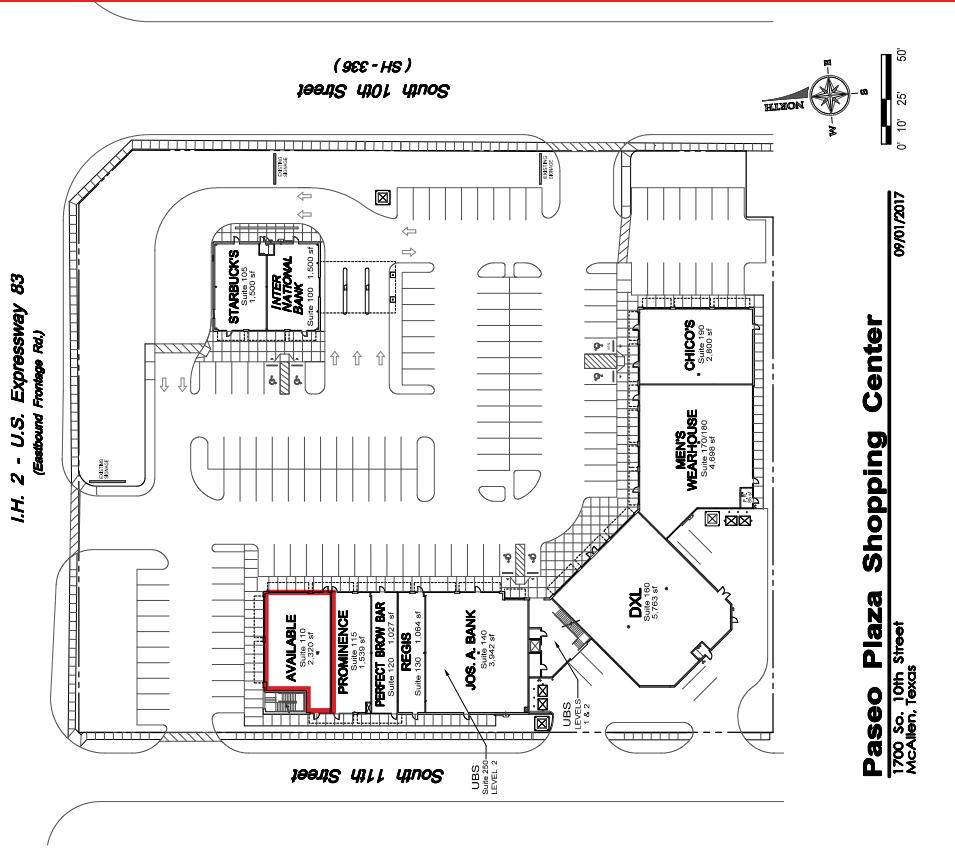


PASEO PLAZA | SWC of South 10th Street and Hwy 83

Rioco Real Estate Services

SITEPLAN / OVERVIEW

AVAILABLE FOR LEASE



LOCATION
SWC of South
10th St and HWY 83

AVAILABLE SF
2,320 sf

LEASE RATE
Call (956) 630-9400
for more info.

ANCHOR TENANTS
> Starbucks, Jos A. Bank
> Chico's, Regis Salon,
> Men's Warehouse, DXL



PASEO PLAZA | SWC of South 10th Street and Hwy 83

Rioco Real Estate Services

AERIAL

AVAILABLE FOR LEASE



PASEO PLAZA

DXL MENS APPAREL | JOE'S A. BANK | INTER NATIONAL BANK

MEN'S WEARHOUSE | Starbucks

UBS

CENTRAL MARKET PLACE

SEMPRE Natural | ROSS DRESS FOR LESS

T-Mobile | dd's DISCOUNTS

VANTAGE BANK TEXAS | FAMS

BEST BUY | DAVID'S BRIDAL

LA PLAZA MALL

macy's | Dillard's

BANANA REPUBLIC | JCPenney

FOSSIL 1954 | GAP

OfficeMax | Michaels

PET SMART | BED BATH & BEYOND

Pier 1 imports

LAS TIENDAS PLAZA

Office DEPOT | TARGET | SHOE CARNIVAL

ROSS DRESS FOR LESS | Marshalls



PASEO PLAZA | SWC of South 10th Street and Hwy 83

Rioco Real Estate Services

PROPERTY STATISTICS

**AVAILABLE
FOR LEASE**



DEMOGRAPHICS

POPULATION	1-MI.	3-MI.	5-MI.
2015 Male Population	3,339	35,991	104,170
2015 Female Population	3,523	38,954	111,884
% 2015 Male Population	48.66%	48.02%	48.21%
% 2015 Female Population	51.34%	51.98%	51.79%
2015 Total Population: Adult	5,161	53,770	150,451
2015 Total Daytime Pop.	18,576	109,631	248,067
2015 Total Employees	14,185	61,354	111,503
2015 Total Pop: Median Age	38	34	32
2015 Total Pop: Adult Median Age 50		47	45

POPULATION CHANGE	1-MI.	3-MI.	5-MI.
2015 Total Population	6,862	74,945	216,054
2015 Households	2,313	23,494	65,894

HOUSING	1-MI.	3-MI.	5-MI.
2015 Housing Units	2,733	23,696	55,525

INCOME	1-MI.	3-MI.	5-MI.
2015 Household Income: Median	\$30,179	\$32,868	\$38,832
2015 Household Income: Average	\$53,692	\$49,705	\$56,828
2015 Per Capita Income	\$18,566	\$15,779	\$17,449